

Controlled by
DX200

With its long arm, the 6-axis MOTOMAN MA2010 high-speed robot offers the greatest reach in its class (max. 2010 mm) and a high payload capacity of 10 kg. Despite the use of a heavy welding torch, it can thus move a long way into fixtures or work pieces. The MOTOMAN MA2010 has been specially developed for welding thin work pieces using the front pull system or water-cooled welding torches. With the extended hollow structure (diameter 50 mm) of the upper arm, this robot enables internal routing of the welding hose package, thereby increasing its service life and reducing interference contours. With its streamlined design, the MOTOMAN MA2010 has a minimal footprint, enabling multiple manipulators to be lined up close together. Furthermore, its fast motion sequences and high repeatability ensure high work piece output.



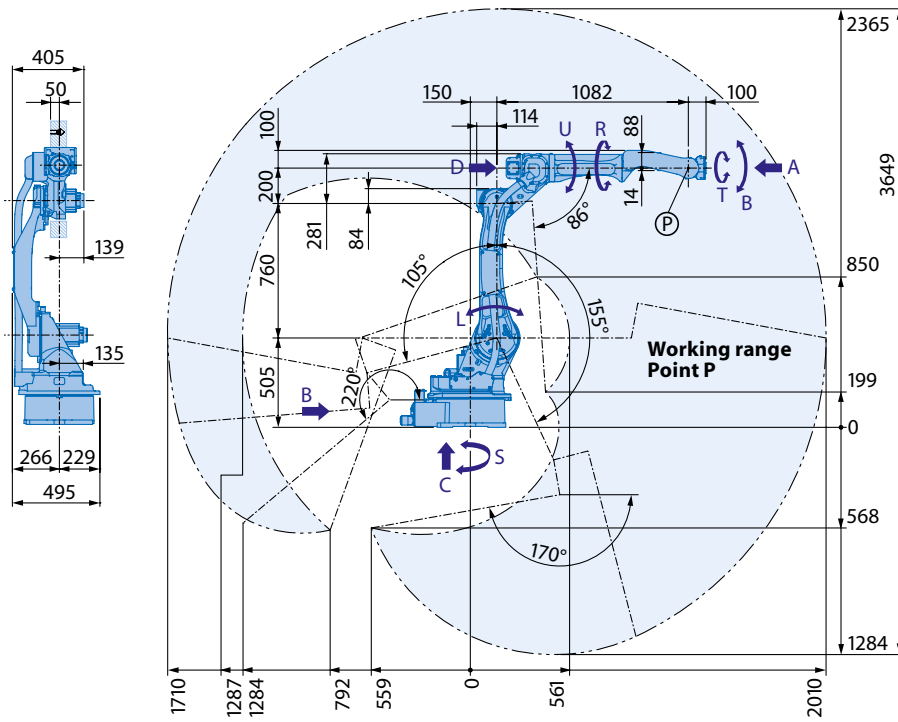
Key benefits

- Greatest reach in its class: 2010 mm
- High payload capacity: 10 kg
 - Enables the mounting of heavy water-cooled torches or front pull system
 - Specially developed for welding thin workpieces
- Hollow front arm:
 - Diameter 50 mm
 - Minimized interference contours
- Streamlined design
- High productivity

MOTOMAN MA2010

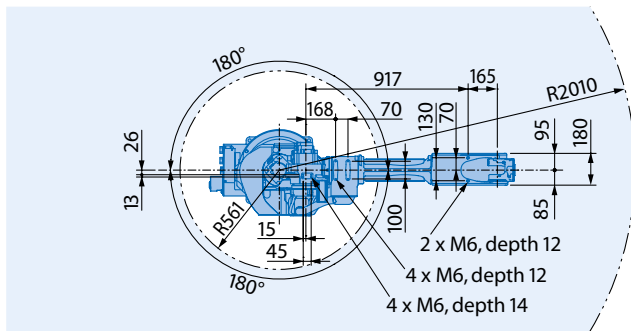
Shielded arc welding

 **YASKAWA**

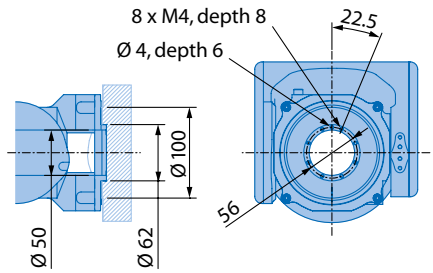


Please note wall mounting option:
+/- 30°
S-axis limit

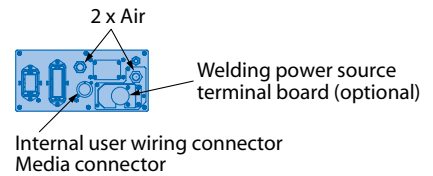
Please note ceiling mounting option:
Depends on B-axis position



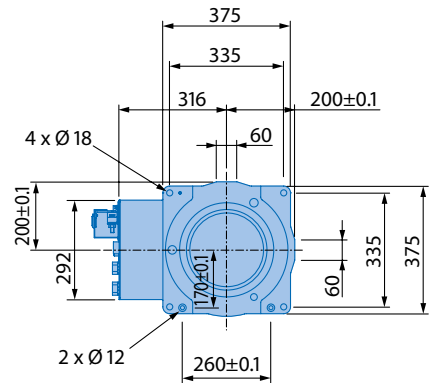
View A



View B

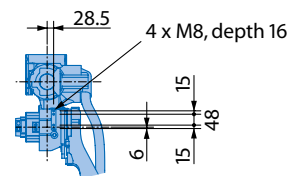


View C



Mounting options: Floor, wall, ceiling

View D



All dimensions in mm | Technical data may be subject to change without previous notice | Please request detailed drawings at robotics@yaskawa.eu.com - YR-MA2010-A01, YR-MA2010-A11, C-03-2015, A-No. 166334

Specifications MA2010 (Type floor, wall: YR-MA2010-A01, type ceiling: YR-MA2010-A11)

Axes	Maximum motion range [°]	Maximum speed [°/sec.]	Allowable moment [Nm]	Allowable moment of inertia [kg · m ²]	Controlled axes	6
S	±180	197	-	-	Max. payload [kg]	10
L	+155/-105	190	-	-	Repeat. pos. accuracy [mm]	±0.08
U	+220/-170	210	-	-	Max. working range [mm]	R = 2010
R	±150	410	22	0.65	Temperature [°C]	0 to +45
B	A00: +90/-135 A10: +135/-90	410	22	0.65	Humidity [%]	20 - 80
T	±210	610	9.8	0.17	Weight [kg]	280
					Power supply, average [KVA]	2.0



YASKAWA
Headquarters

YASKAWA Europe GmbH
Robotics Division
Yaskawastraße 1
D-85391 Allershausen
Tel. +49 (0) 81 66/90-0
Fax +49 (0) 81 66/90-103
robotics@yaskawa.eu.com
www.yaskawa.eu.com

YASKAWA academy
and sales office
Frankfurt

YASKAWA Europe GmbH
Robotics Division
Hauptstraße 185
D-65760 Eschborn
Tel. +49 (0) 6196/77725-0
Fax +49 (0) 6196/77725-39
robotics@yaskawa.eu.com
www.yaskawa.eu.com